

Criminal Gangs

Understanding the Modern Threat



Sergeant Andrew Eways
Aurora Police Department

Special thanks to Crime Stoppers USA for hosting this presentation.



CRIME
STOPPERS
— USA —

Andrew Eways
(410) 977-9589
Training@bluelineacademy.org

Andrew Eways
Training@bluelineacademy.org
(410) 977-9589

- Nearly thirty years of sworn law enforcement experience. Formerly with the Maryland State Police, Currently a Sergeant with the Aurora (CO) Police Department.
- Bachelor of Science in Criminal Justice (Provident University). Certified Homeland Security Specialist (Louisiana State University).
- Supervised Maryland State Police Homeland Security Intelligence Section, Organized Crime Unit, Gang Investigation Unit, and Criminal Investigation Section.
- Participated, Assisted and Consulted in gang, organized crime, and career criminal investigations being conducted by Federal, State, and Local law enforcement.

Andrew Eways
Training@bluelineacademy.org
(410) 977-9589

- Provided Expert Testimony in multiple cases involving various criminal street gangs, prison gangs, and other organized crime groups.
- Continue to provide instruction to members of the law enforcement and correctional communities throughout the United States in gangs, organized crime groups, and effective investigative techniques.




BLUE LINE ACADEMY

www.bluelineacademy.org

Blue Line Academy - Home

https://bluelineacademy.org/default.aspx?MenuItemId=4&MenuGroup=Public+Home

Deferred Compens... Los Angeles County... Inbox - bluelinea... Conejo & Tatto In... BROWN KINGDOM... STC Learning Gate... The Five Tigers of J... WHATS PRIMERA F... Other bookmarks

 **BLUE LINE**
ACADEMY

LAW ENFORCEMENT TRAINING AND CONSULTATION

HOME ABOUT US COURSES TRAINING CALENDAR CONTACT US MAILING LIST LOGIN

Preparing Law Enforcement to Understand, Detect, and Combat Organized Crime Groups

As criminal gangs, Drug cartels, human trafficking organizations, transnational gangs, and other organized crime groups expand their reach, the threat they pose to our communities grows with them.

It is the mission of Blue Line Academy to prepare members of our law enforcement community to understand, detect, and combat these organizations. Blue Line Academy provides professional instruction for Federal, State, Local, and Tribal law enforcement, Correctional Officers, Parole Officer, Probation Officers, and Prosecutorial personnel.

Blue Line Academy
88 likes

Liked Share

Blue Line Academy
about a month ago

Yesterday I had the honor of being named as the 2022 Rocky Mountain HIDTA's Instr not only honored but also hum for this award, let alone actual I would like to take this opportunity to thank the Rocky

Join Mailing List

https://bluelineacademy.org

24°F Partly cloudy

Search

11:53 PM 1/11/2023

Why is gang training important?



There are approximately 33,000 active criminal gangs, outlaw motorcycle gangs, and prison-based gangs operating in the United States.

In total, these active gangs have approximately 850,000 known members.

The National Gang Intelligence Center estimates that this number increases by approximately 8 percent every year.





Over the past several years, criminals have become more and more proactive in their efforts to commit acts of violence against law enforcement.

Despite our best efforts, law enforcement remains largely reactive in how they address gang violence.

Definitions

Criminal Gang

Gang Member

Gang Associate

Conspiracy

Transnational Gang

Criminal Gang

A group of three or more individuals with a common name, symbol, manner of dress, or other commonality who, either individually or as a group, engage in or have engaged in a pattern of criminal activity.



Gang Member

Any person who meets three or more established criteria for identification as a gang member who engages in or has engaged in a pattern of criminal activity.



Gang Associate

A person who has met one or more established criteria for gang membership, who associates with known gang members other than family members and may engage in or support others in a pattern of criminal activity.



Criminal Conspiracy

An agreement between two or more subjects, either formal or informal, to commit a criminal act accompanied by an overt act toward the furtherance of the agreement.



Transnational Gang

(As Defined for Congressional Research Service, January 20, 2010)

A group of three or more subjects who:

- Are criminally active in more than one country
- Commit crimes in one country that are controlled by leadership in another country
- Are mobile and adaptive to new areas of operation
- Have sophisticated criminal activities that transcend borders



Why do people join gangs?

Psychological Factors

Sociopathic Personality

Low Self-Esteem

Sense of Victimization

Violent Tendencies

Etc.



Sociological Factors

Sense of Belonging

Perceived Need for Protection

Family Tradition

Neighborhood Ties

Racist/Separatist Beliefs

Monetary Gain



Why is gang activity spreading to new areas?

Law Enforcement Pressure

Denial

Lack of Training

Lack of Resources

Lack of Community Support

Migration and Immigration

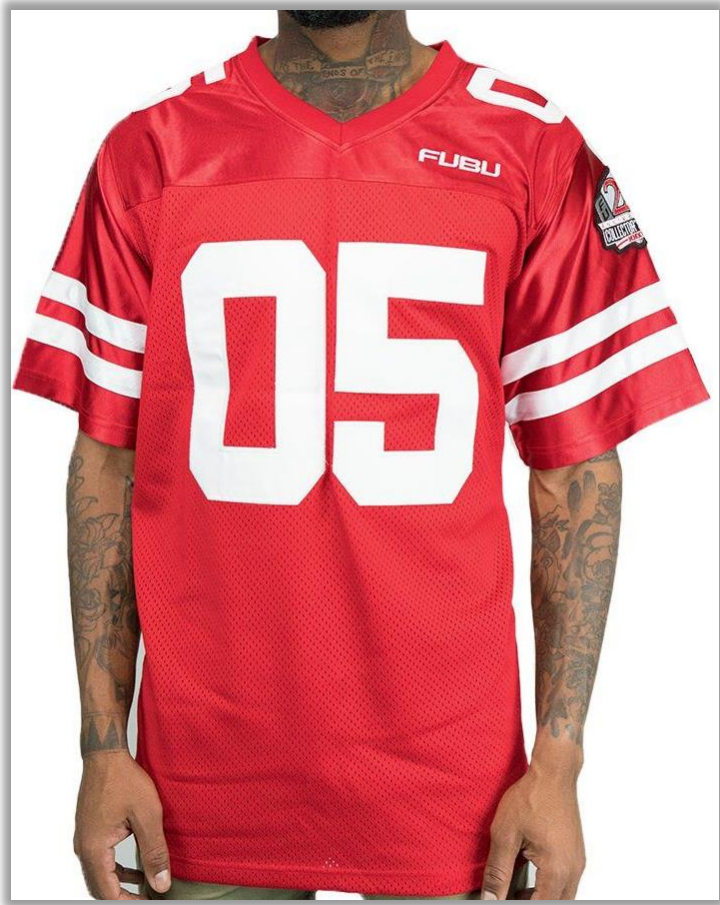
Jails and Prisons

Displacement



Media and Pop Culture Portrayal







South Side

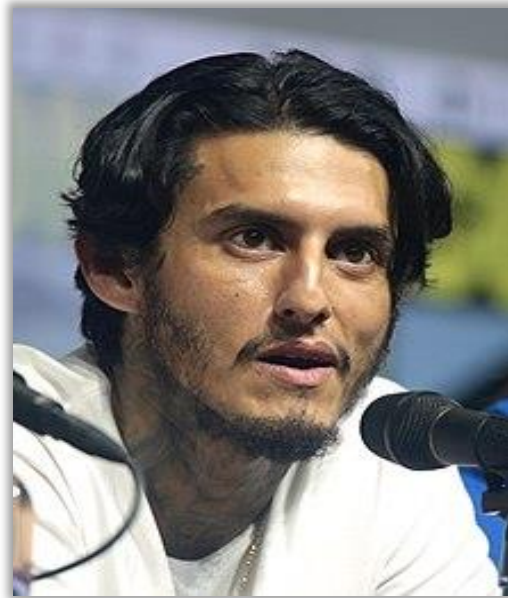


Celebrities with open gang affiliation often become a negative inspiration for younger fans.

The gang affiliation of many artists and musicians has led to gang violence between rival artist and between groups of fans.



Tracy Marrow
Crips



Richard Cabral
Sureños



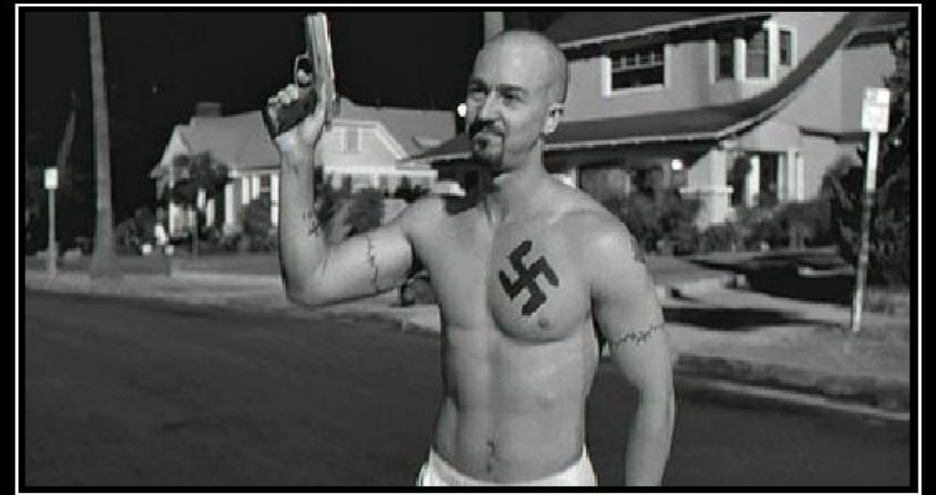
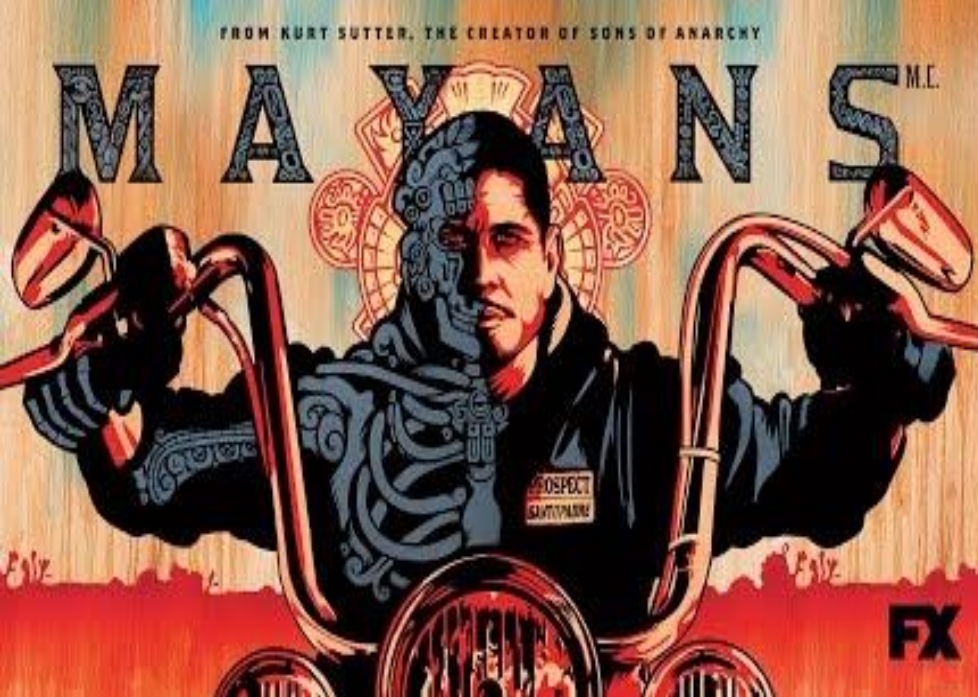
D. L. Hughley
Bloods



Emilio Rivera
Sureños - Frogtown 13

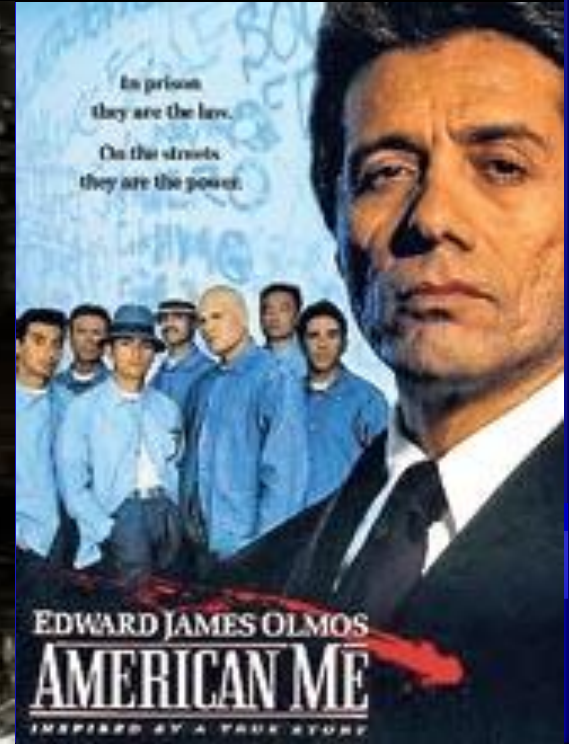
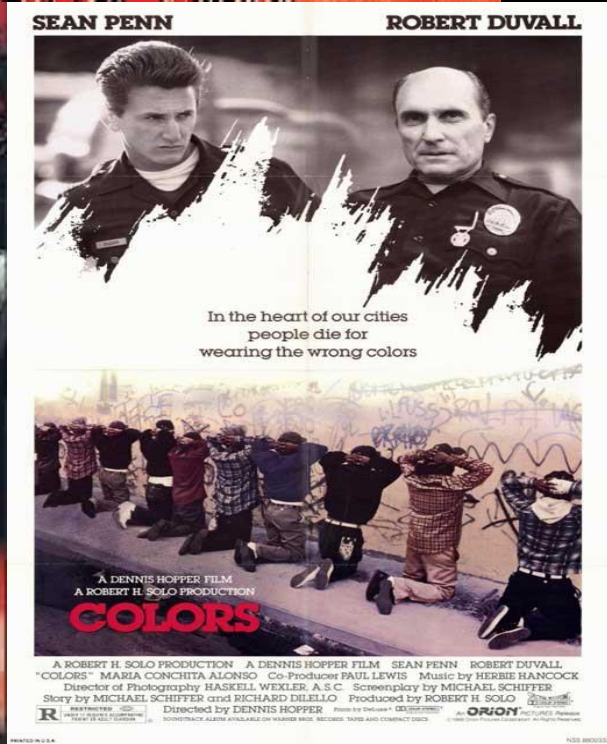


Danny Trejo
Sureños - Sotel 13



American History X

Derek Is One Bad Ass Motha Fucka



What do you really know about gangs?







Almost every jurisdiction in the United States has specific gangs which are native to that jurisdiction.

From a broader perspective, there are nationally-known gangs which have a representation in many jurisdictions despite their area of origin.

These nationally known gangs can be categorized into groups based on their region of origin.

Midwest Gangs



In the 1970s, gangs in the Cook County (IL) Jail and the Illinois Department of Corrections began a practice of “coalition building” to better protect incarcerated gang members.

The majority of the gangs, who largely came from the City of Chicago, divided into the Folk and People Nations.

Folk Nation

The gangs of the Folk Nation tend to wear combinations of Blue, Black, Silver, and White. They include the following gangs:

Gangster Disciples

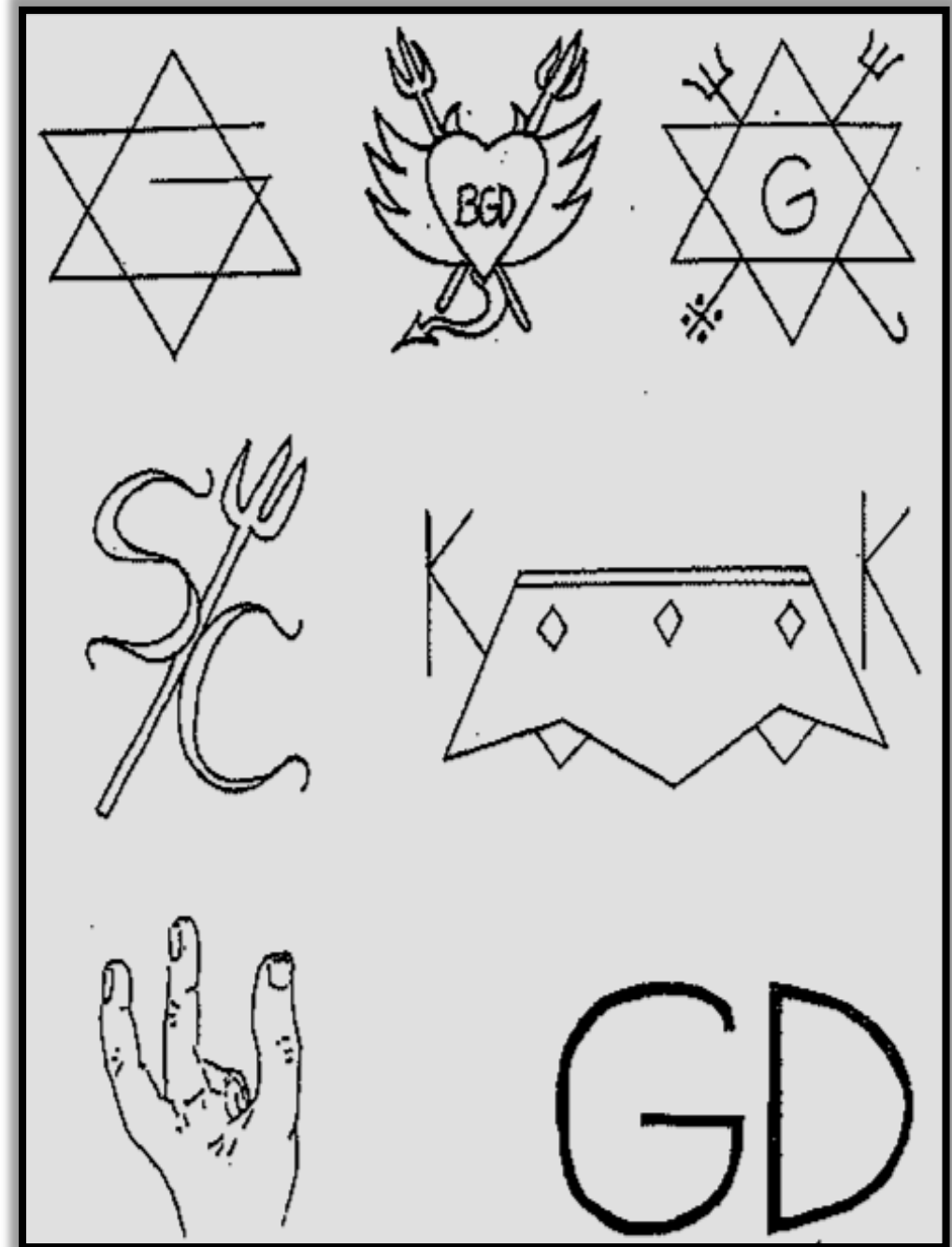
Black Gangsters

Simon City Royals

Satans Disciples

Spanish Cobras

Ashland Vikings



People Nation

The gangs of the People Nation often wear combinations of Black, Gold and Red. They include the following gangs:

Vice Lords

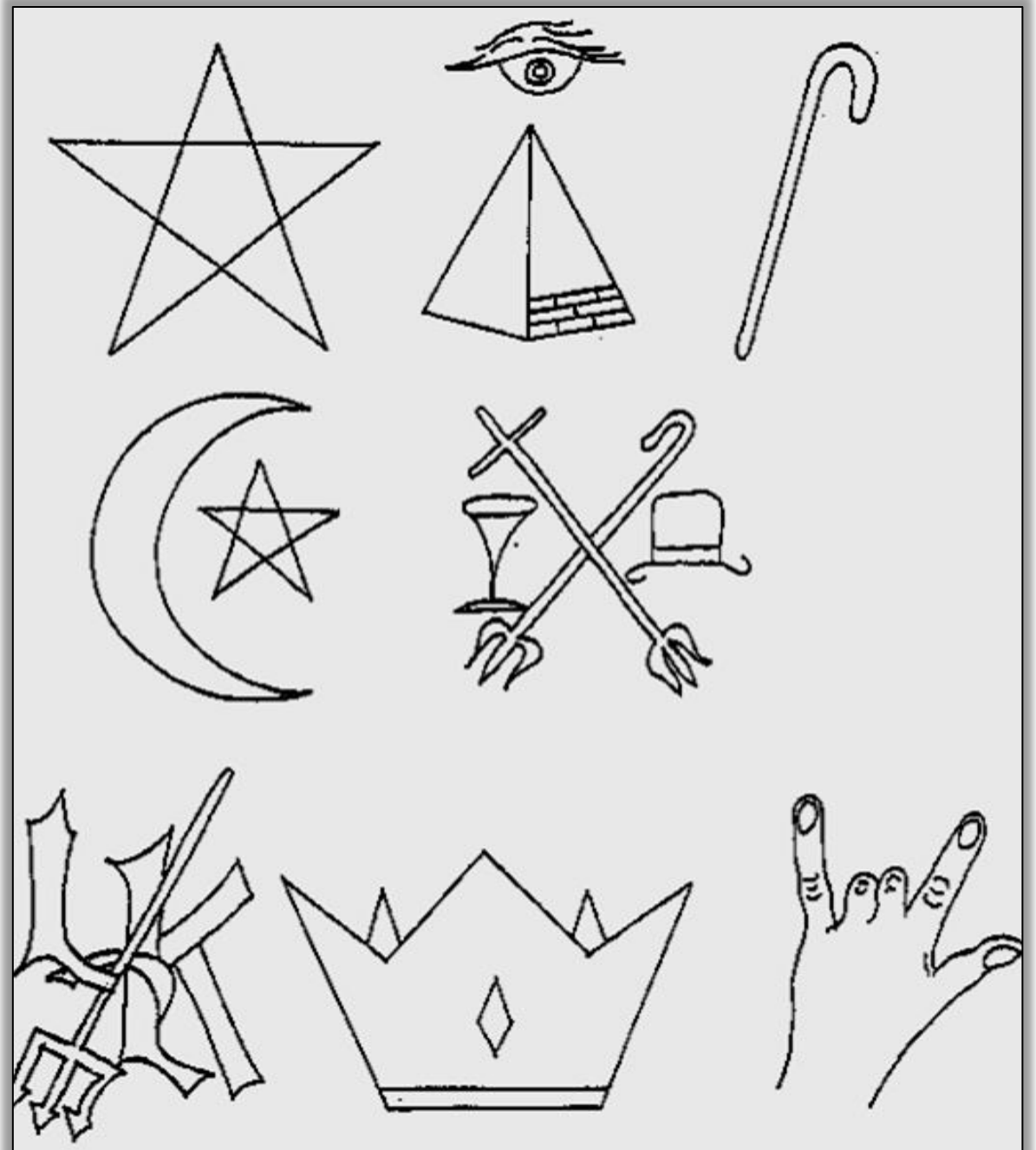
Bishops

Black P Stones

Latin Kings

Latin Saints

Four Corner Hustlers



West Coast Gangs

West Coast Gangs

The west coast gangs, those originating in California, are largely divided into five groups:

Crips

Bloods

Sureños

Norteños

Bulldogs

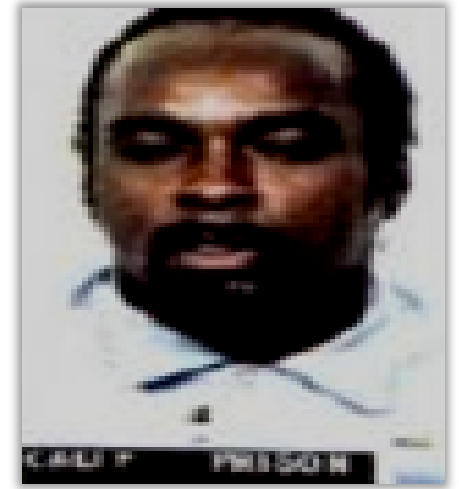


Crips

Formed in the late 1960s by Raymond Lee Washington, Stanley Williams and other associates. Originally named the Baby Avenue Crips.

Often wear blue clothing, beads or bandanas. Certain sets will identify themselves through other colors including purple and orange.

Various sports logo and brand name clothing to identify Crip affiliation or specific set.

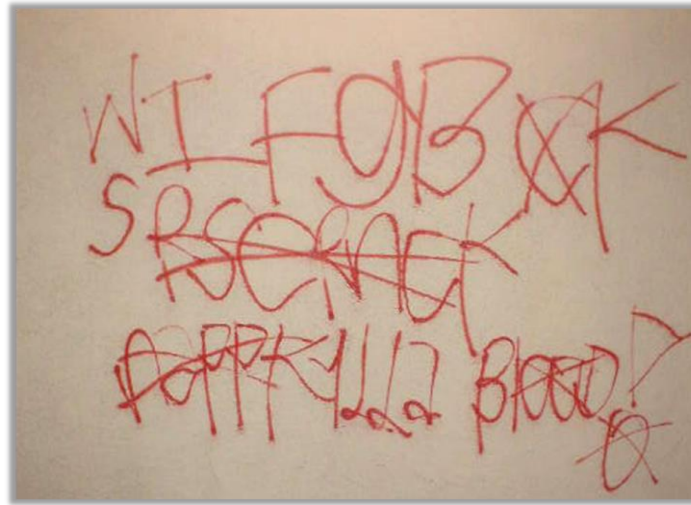


Bloods

During the summer of 1972, Crip gangs initiated a violent conflict with the Piru Street Boys. Piru Street Boys ultimately lost the conflict due to lower membership and no allies.

To defend themselves against the Crips, other gangs formed an alliance with Piru Street. This alliance became known as the Bloods.

Commonly use red clothing, specific logos and name brands, as well as tattoos, graffiti, and hand signs.

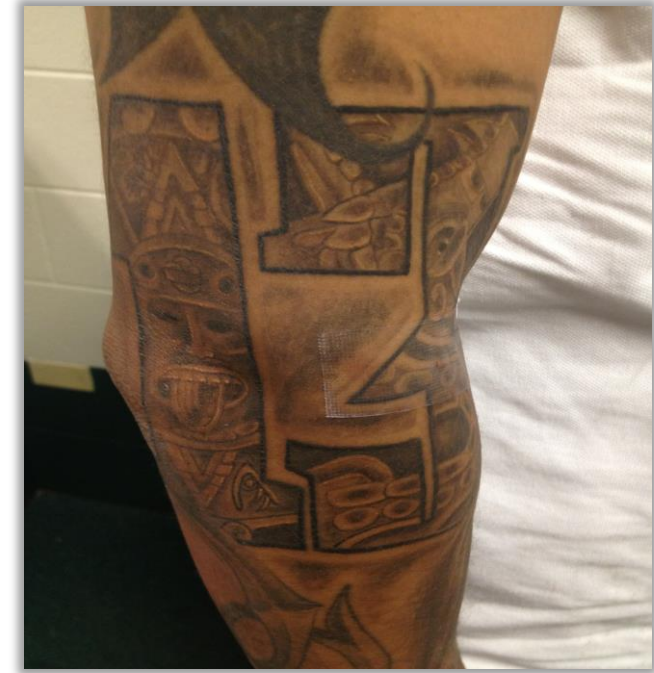


Sureños

The term “Sureño” literally means “Southerner”. It was originally adopted by Hispanic gangs loyal to the Mexican Mafia. The majority of these gangs were from Southern California.

Other common terms both inside and outside of correctional facilities are South Sider, Southerner, SUR, and Southern Mexican.





Between the mid 1980s and 1992, Sureño gangs began using the number 13 to represent their allegiance to the Mexican Mafia. The number 13, in all its forms, represents the letter M for La Eme.

In 1993, La Eme organized a series of meetings for Sureño gangs throughout Southern California. The purpose of the meetings was to solidify control over the Sureños by issuing edicts for behavior.

The edicts included the elimination of drive-by shootings, forbidding the sale of narcotics on school grounds, and other rules designed to take law enforcement pressure off Eme-controlled narcotics operations.





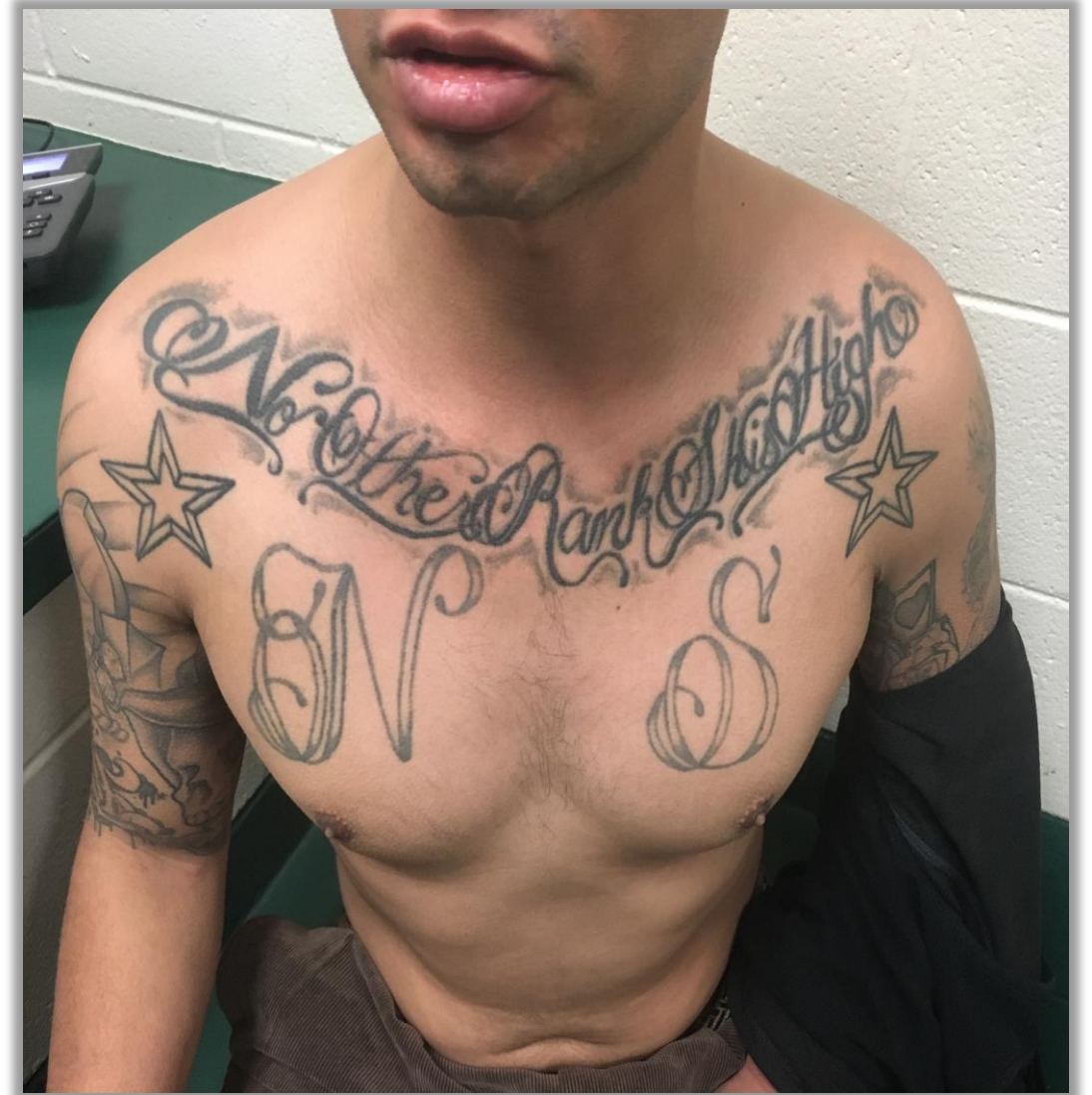
Norteños

Northern California counterpart to the Sureño gang population.

Follow the regulations and orders of the Nuestra Familia prison gang.

Ongoing rivals with Sureño gangs in virtually every jurisdiction where they co-exist.

Commonly use the color red, the number 14, and the Huelga bird. References to the north, including Northside and Norte.



North Side Mafia



N



G

NO SLEEP GANG

Common Symbols

Huelga Bird

14

X4

XIV

Red





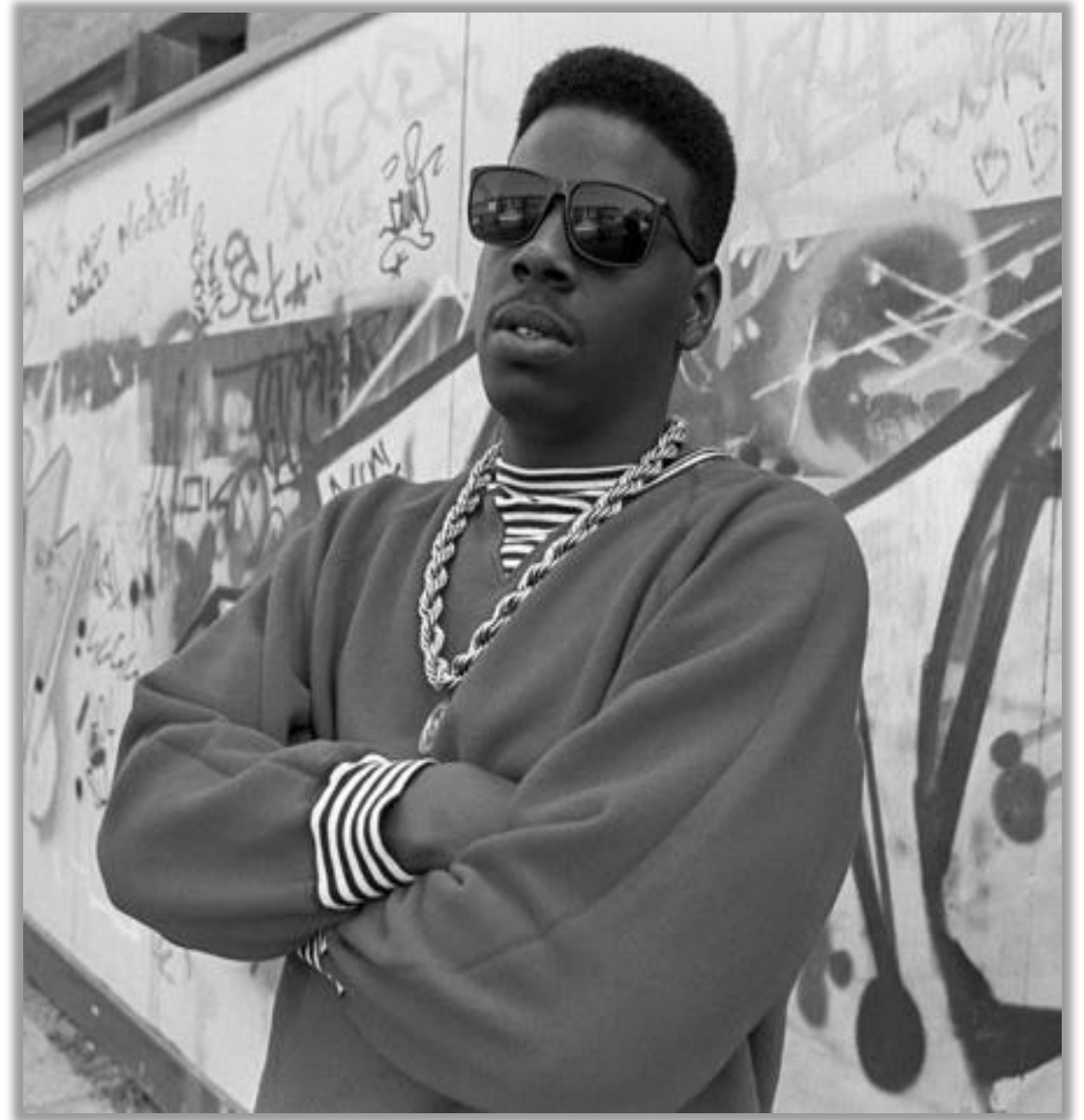
Gangster Rap Culture

P A R E N T A L

A D V I S O R Y

E X P L I C I T C O N T E N T

- Gangster Rap movement began in Philadelphia in the 1980s with the music of Jesse Weaver Jr., known by the stage name Schoolly D.
- Member of the Park Side Killers gang. Claimed PSK in his music.
- Lyrics openly discussed prostitution, drug use, drug dealing, weapons, and violent crimes.





Ice T
West Side Harlem Rolling 30 Crips





Eazy E and MC Ren
Kelly Park Compton Crips



BLUE LINE
ACADEMY



Snoop Dogg
East Side Long Beach Rolling 20 Crips



BLUE LINE
ACADEMY



Conejo
Harpys 25th Street



BLUE LINE
ACADEMY

1980s:

Rappers talked about the things they witnessed on the street.

1990s:

Rappers talked about the crimes they committed on the street.

2000s:

Gangster Rap became a form of personal gang rivalry between artists and their gangs.





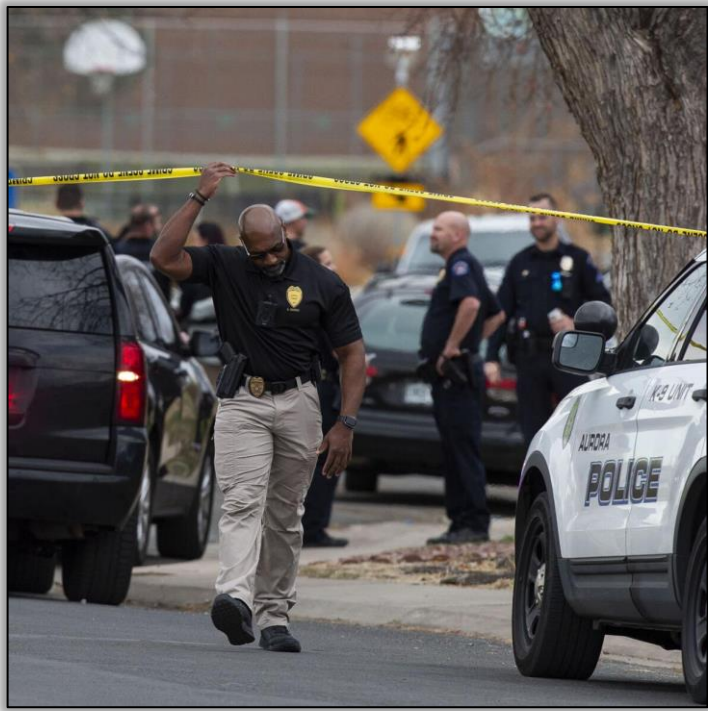
Drill Rap Movement

The Drill Rap Movement

Began in Chicago around 2012 with the release of Chief Keef's first album, entitled *Finally Rich*. Centers around gang violence and first-person accounts of past and future violent acts.



Hybrid Gang Activity



There is a nationwide trend toward school-age gang members with newly formed or splinter identities.

These groups are increasingly violent and lack the discipline, business sense, or fear of repercussions which were evident in traditional gangs.

Significant social media presence and generally operate for the thrill of committing acts of violence in lieu of seeking profit.

Seanville

- Formed in 2014 following the murder of East Side Crip gang member Reysean Abram.
- Abram was murdered after a fight between rival gangs at a house party he was attending.
- Associates and a small group of fellow gang members formed Seanville and immediately began a rivalry with other Crip gangs.



Seanville

- Original rivalry was with specific Crip gang they held responsible for Abram's murder.
- Currently, members claim rivalry with all Crip gangs as well as other gangs. Members refer to Seanville as a "solo gang" with no alliances.
- Involved in motor vehicle thefts, drug distribution, robberies, and other violent crimes.
- Use Victoria Secret logo as well as other logos with the letters V or S.



The Modern Gang Threat



Traditional criminal gangs exist for profit and power. They are geographically based and may have corporate structure. Contemporary gangs often take on hybrid identities and may have no obvious structure.

Traditional criminal gangs committed crimes to increase their influence and profit. Contemporary gangs commit crimes of extreme violence for thrill alone.

Traditional criminal gangs learn from mistakes of the past and take steps to avoid arrest. Contemporary gangs are not deterred by the prospect of arrest or even death.

The Modern Gang Threat



Contemporary gangs tend to range in age from 12 to 18. They tend toward armed robberies, armed carjackings, and shootings. They often commit the latter without obvious provocation.

They often commit their violent crimes in sprees, committing a series of several crimes close in both proximity and time.

In several recent incidents, members of these gangs have chosen either suicide or suicide-by-cop over the prospect of capture.



Questions?

Criminal Gangs

Understanding the Modern Threat



Andrew Eways
(410) 977-9589

Training@bluelineacademy.org