

# *Honolulu Police Department Cold Case Homicide Project “A’ole Poina”*



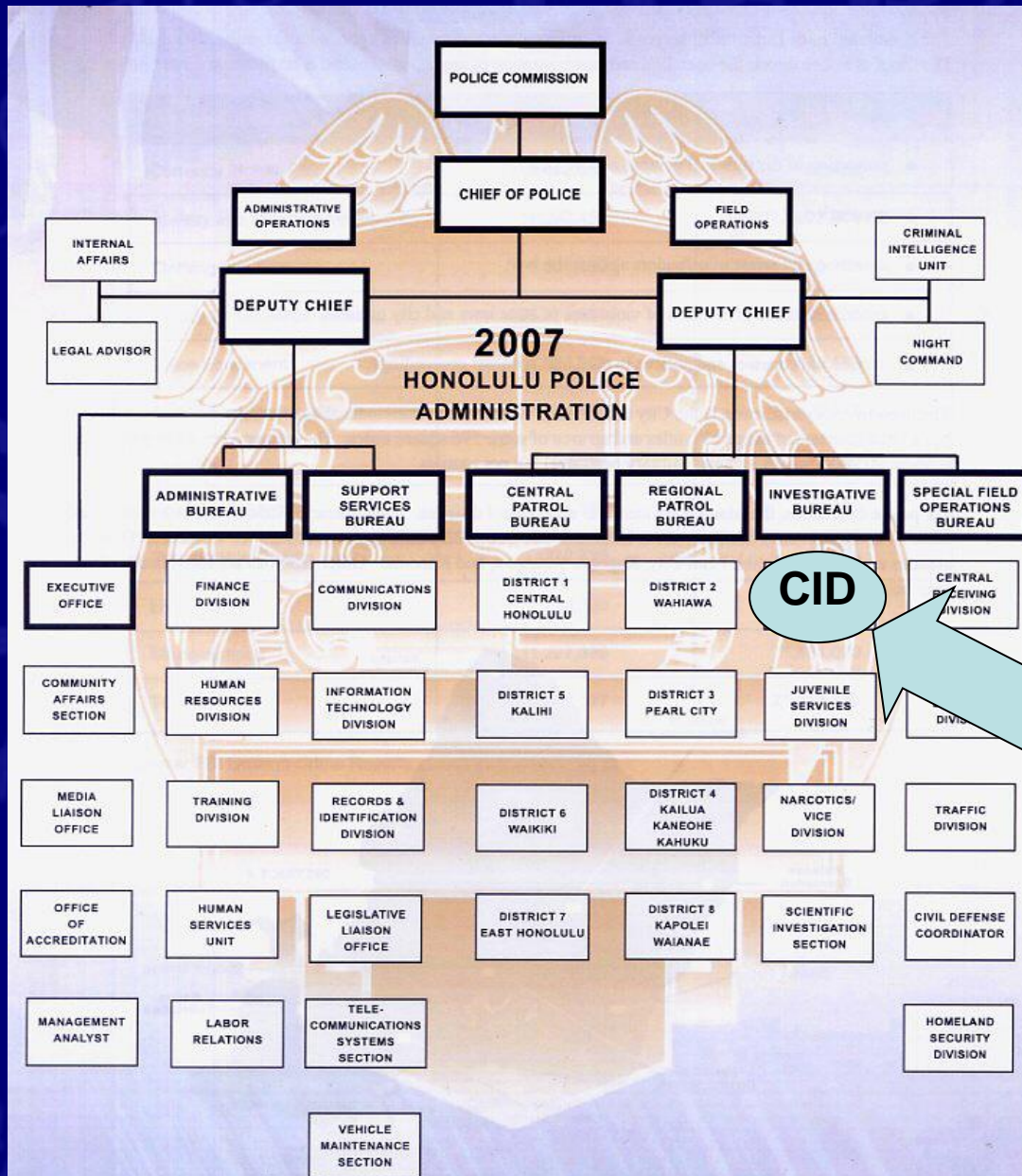
*Detective James Slayter  
August 1, 2017*

# ***BACKGROUND/ BIO***

Joined HPD in 1996 :

- Patrol + Field Training Officer in Kalihi, Waikiki and Downtown
- Bicycle/ ATV Detail in Waikiki
- Crime Reduction Unit in Waikiki and Kalihi
- HPD Training Academy Instructor
- Criminal Investigation Division (CID) specifically assigned to Auto Theft, Major Crimes, Child Abuse, Domestic Violence, Administration and now...

# HPD ORGANIZATION



I AM HERE,  
COLD CASE  
HOMICIDE

# ***CRIMINAL INVESTIGATION DIVISION***

- Investigates and makes dispositions on criminal cases involving homicide, assault, domestic violence, child abuse, robbery, fraud, and missing persons
- Assembles evidence to identify and apprehend criminals and prepares cases for prosecution

# ***CRIMINAL INVESTIGATION DIVISION***

- Major
- Captain (2)
- Lieutenants (11)
- Detectives (92)
- Officers (10)
- Civilian Support Staff (10)



# ***CRIMINAL INVESTIGATION DIVISION***

- The Criminal Investigation Division is made of two sections:
- Violent Crimes Section
- Property Crimes Section

# ***VIOLENT CRIMES SECTION***

- **Homicide & Cold Case Homicide**
- **Child Abuse**
- **Family Violence**
- Internet Crimes Against Children
- **Missing Persons**
- Polygraph
- Robbery
- Sex Crimes
- Strategic Enforcement Detail
- Word Processing Section



# ***PROPERTY CRIMES SECTION***

- **Auto Theft**
- CrimeStoppers
- Extradition
- Financial Fraud
- **First Watch**
- Third Watch
- **Major Crimes**



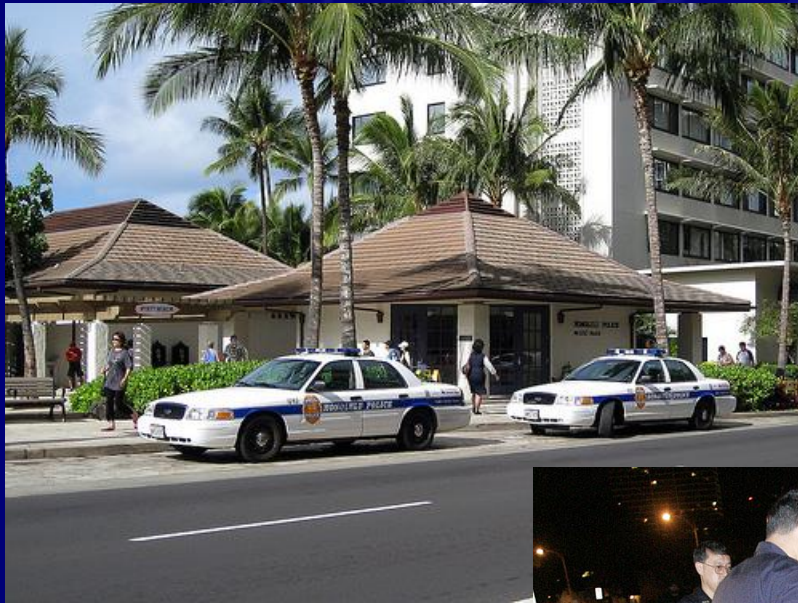
# ***INVESTIGATIVE PROCESS***

- Offense Committed



# ***INVESTIGATIVE PROCESS***

- Crime Reported



# ***INVESTIGATIVE PROCESS***

- Patrol Investigation



# ***INVESTIGATIVE PROCESS***

- CID Investigation



# ***INVESTIGATIVE PROCESS***

- Conferral



# ***INVESTIGATIVE PROCESS***

- Court



# ***HOMICIDE DETAIL***

- The Homicide Detail consists of the following personnel:
  - 1 Lieutenant
  - 8 Detectives (4 Response Teams)
  - 2 Detectives (Cold Case Detail)
  - 1 Detective/ 1 Officer (Missing Persons Detail)

# ***COLD CASE INVESTIGATIONS***

- Unsolved murder and missing person cases are kept indefinitely for periodic review and re-investigation
- We have more than 250 cold case homicides since the late 1960's
- In 2016, we redesigned the entire system of how we investigate and maintain these cases

# ***A'OLE POINA PROJECT***

## **A'OLE POINA**



## **NEVER FORGOTTEN**

**HONOLULU POLICE DEPT.  
COLD CASE HOMICIDE DETAIL**

# ***A'OLE POINA PROJECT***

- A portion of the funding was obtained through grant solicitation (DOJ)
- Working files were moved from a storage closet to an office with organized shelving
- We worked with our Information Technology Division to create a Cold Case Homicide Investigative Log (CCHIL)

# ***A'OLE POINA PROJECT***

- The CCHIL is a database that provides investigators with quick access to the details of each case and it's progress
- This also provides easier transition for detective turnover and faster response to family inquiries
- Using CCHIL we can also look for similarities and correlations among cases

# ***A'OLE POINA PROJECT***

- We are currently reviewing each of the 250+ cases and entering the information into the CCHIL
- While reviewing the cases we can be sure the files are complete and up to date
- We are also ensuring that all related evidence has been tested with the most recent technological advancements in DNA

# ***A'OLE POINA PROJECT***

“ Relationships change over time”

Sgt. Kim Buffet-Feigenspan

- Even with all we are doing internally, we know that help from the public can be the catalyst to get these cases far enough to be solved and prosecuted

# ***A'OLE POINA PROJECT***

- With that in mind, we also created a web page to be posted on the Honolulu Police Department web site
- The A'ole Poina page will provide the public with access to basic information for each case and an avenue to provide information
- Links will be provided to contact us in HPD and CrimeStoppers

# A'OLE POINA PROJECT

08-01-2017 14:13:16

Title: Stacey B. Gilman

Description: Stacey Gilman, a 19 year old female tourist, was tragically shot and killed while walking along the shoreline of a Waikiki Beach. Sketches were released in the hopes someone could help identify the suspect and a person of interest. If you have any information related to this case, please

Date: 07 04 1981

Add all the email addresses below separated by a comma.

Email Contact: hpdccidcoldcase@honolulu.gov

Internal Only: No

[Add/Edit Videos](#)



MALE SUSPECT

Unknown local male, about 30 years of age, 5'8" tall, 150 pounds, slim to medium build, dark wavy hair down to neck, tanned complexion, dark mustache, some pock marks on face.



MALE SUSPECT

Unknown Caucasian male, about 30 years of age, 5'8" tall, 150 pounds, medium build, blond straight crew-cut hair, fair complexion, light-colored eyes, appeared to be a military serviceman.

# ***A'OLE POINA PROJECT***

- We are also working with local media to highlight one cold case homicide each month
- CrimeStopperrs will be identified as an excellent avenue to provide information
- Similar methods will be used for unsolved missing person cases

# ***A'OLE POINA PROJECT***

- We anticipate a great increase of calls to CrimeStoppers over the next two to three years as we complete this project
- Any information can be helpful so please try to solicit as much as possible
- CrimeStoppers and HPD have a had a great relationship over the years and we look forward to working together to solve these murders

The background of the slide features a large, faint, blue-tinted seal of the Hawaii Police Department. The seal is circular with a rope-like border. Inside the border, the words "POLICE DEPARTMENT" are written in an arc at the top, and "HONOLULU" is written in an arc at the bottom. In the center of the seal is a shield with various symbols, including a cross and a star, flanked by two palm trees. Above the shield is an eagle with spread wings.

Questions?

The background of the image is a solid blue color. Overlaid on this background is a large, faint, circular seal of the Hawaii Police Department. The seal features an eagle with spread wings at the top, a shield with a cross in the center, and the words "HONOLULU" and "POLICE" visible. The words "HAWAII POLICE DEPARTMENT" are written around the perimeter of the seal.

**THANK YOU!!!**